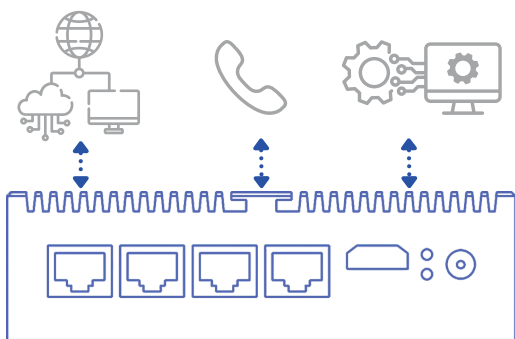


all-in-one platform "SDK"

networking phones automation



abilis "SDK"

Get in touch

Email : info@antek.lv

Website : antek.lv

Location : Skunu iela 13 - 10, LV-1050
RIGA, Latvia

Today few people care about Telephony, as it does not produce easy money. However **your voice** is **crucial** for important matters.

With this concept in mind, abilis was equipped with unconventional features: ABILIS VoIP works with perfect quality **where others fail.**

Abilis PBX is made to use **Smartphones as extensions**, featuring also GPS positioning and logging. It controls the QoS of the 'call centre', and includes a two-way email to SMS service.



Visit antek.lv



The@work number +371 64564.22 (extension 22) is used by the ABILIS APP.

Your SIM number remains reserved for your PRIVATE USE.

ABILIS makes this feature **CARRIER INDEPENDENT !**

Take your office **everywhere.**

Equip your smart-workers with a much better VPN solution for **data** and **voice.**

Link your mobile resources (including trucks, vans, cars, ...) to the HQ's PBX and CRM services by means of a single app.

Why choose abilis?

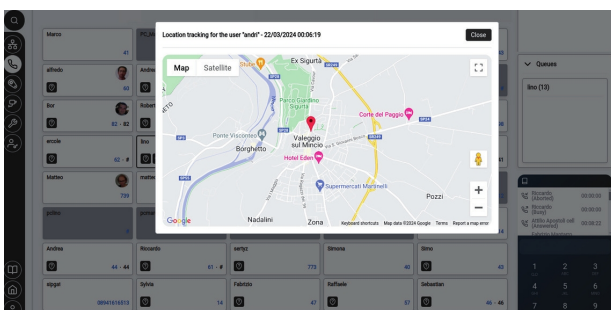
You want to match the advantages of mobility with those of managing the mobile resources of your firm.

Who calls? Who is called in the company? Currently DTAG, Orange, or Vodafone **know more than your company does.**

You want to gain full control over the technology, to **change or mix carriers, as you like, hassle-free.**

You look for a constantly perfect quality of VoIP calls.

You require advanced features, such as setting up a "call centre", installing a two-way SMS to E-Mail exchange system, or locating your smartphones.



The abilis solution

A **comprehensive** PBX for demanding customers, **embedded** in the abilis router, thus VoIP streams are given all the best care to avoid choppy voice quality.

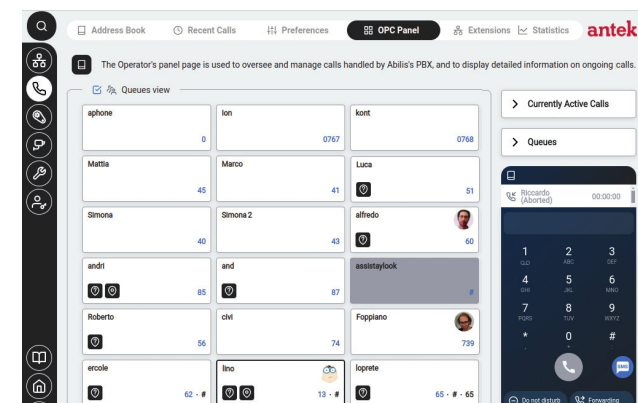
Besides for standard handsets and headsets, the abilis PBX has been **specially made to use Smartphones.** They can be used even in areas without WiFi and Cellular Data service!

The abilis PBX displays and **records diagnostic and statistics** about the users' workload and their QoS. Thresholds for the QoS can be setup to obtain alerts when they are crossed. The PBX is **programmable** with LUA.

■ Continuity & Independence

Mastering the technology in use, you can work with multiple operators simultaneously and **take advantage of their best offers.**

Using multiple carriers also implies better confidence in **service continuity.**



■ Graphical Interface

The responsive web interface includes a full-featured **softphone** and permits to manage a queue of calls for each chosen extension.

Click and call, drag to transfer a call.

■ Advanced Communication

Abilis telephony can be **automatised.** Antek provides instructions and examples of code to **exchange data** in real-time **between the PBX and other IT systems**, such as CRM, digital marketing and other automation tools.